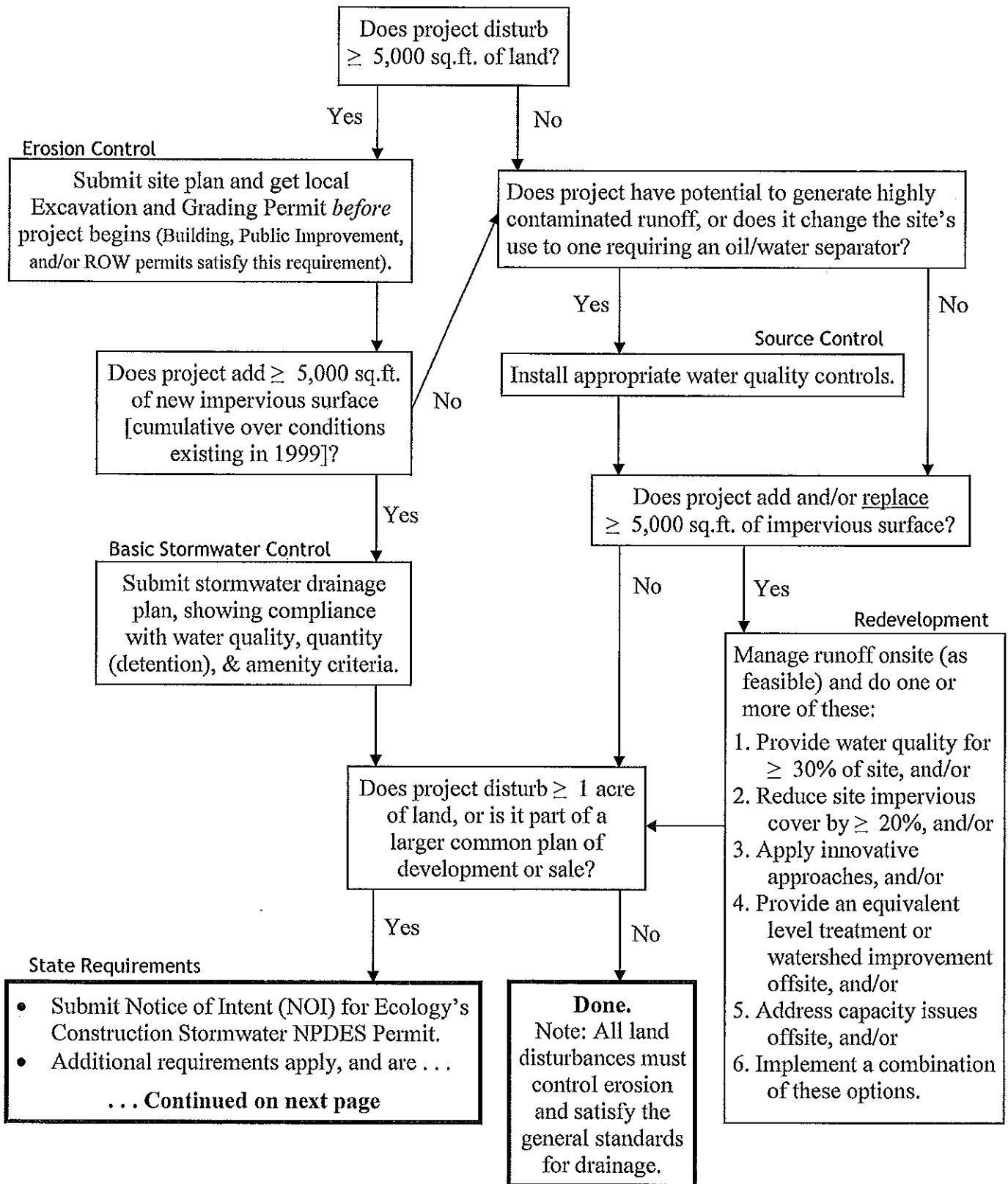


APPENDIX D

LOCAL AND STATE REQUIREMENTS FLOWCHARTS

"LOCAL" REQUIREMENTS FLOWCHART (all projects)



"STATE" REQUIREMENTS FLOWCHART (Projects ≥ 1-Acre)

[Applies to projects disturbing ≥ 1-acre, or less if part of a larger plan of development or sale. Local requirements will apply where more protective (see previous flowchart)].

